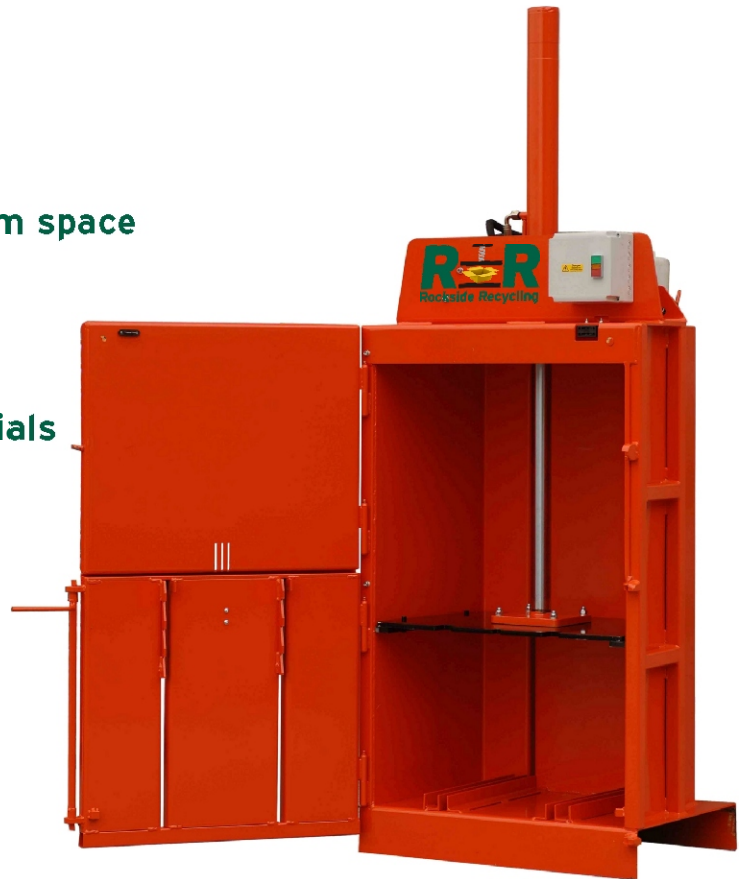


# RR-51 Single Chamber Baler



- Reduces waste disposal costs
- Compact machine occupies minimum space
- Reduces risk of fire
- Leads to a tidy work environment
- Saves time spent managing waste
- Saves space
- Earn income from your baled materials
- Ideal for smaller premises
- Door mounted cord cutter
- Semi-automatic cycle



## SPECIFICATIONS

Feed Opening W x H x D (mm)	715x540x500
Bale Size W x H x D (mm)	715x650x500
Bale Weight (kg) (cardboard)	25kg -> 60kg
Compaction Force	4 tonne
Motor Power	1.1kw
Electric Supply	240V, 13A, single phase
Machine Weight (kg)	375kg
Machine Dimensions W x D x H(mm)	800 x 600 x 2200
Method of removing bales	remove with trolley
Cycle Time (sec)	75
Electric Rating Standard	IP55 (Optional IP65)
Sound Level	65 dBa

*"Turning Waste into Revenue"*

Rockside Recycling reserve the right to alter system specification without prior notice

Unit 9 Rockside Hall, Matlock, Derbyshire, DE4 3RW  
t: 01629 581881 f: 01629 55499

www.RocksideRecycling.co.uk